

# SPEC SHEET + MEASUREMENTS

**SPORT-TEK**

## Sport-Tek® Women's Sport-Wick® Flex Fleece Full-Zip. LST560

### Product photo



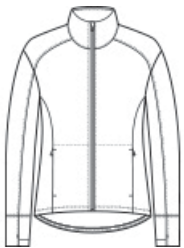
Make your move in Sport-Wick Flex Fleece. Lightweight with stretch, this fleece has a cotton hand, wicks moisture and delivers trend-right style.

- 7.4-ounce, 70/25/5 poly/rayon/spandex
- Tear-away removable label
- Cadet collar
- Zippered side pockets
- Self-fabric cuffs and hem
- Thumbholes for warmth
- Drop tail hem

### CARE INSTRUCTIONS

Machine wash cold with like colors. Do not use fabric softener. Only non-chlorine bleach, when needed. Tumble dry low. Remove promptly. Cool iron, if necessary. Do not dry clean.

### Sketches



front



back

# SPEC SHEET + MEASUREMENTS

**SPORT-TEK**

Sport-Tek<sup>®</sup> Women's Sport-Wick<sup>®</sup> Flex Fleece Full-Zip.  
LST560

## PRODUCT MEASUREMENTS

	XS	S	M	L	XL	XXL	3XL	4XL
Size	2	4/6	8/10	12/14	16/18	20/22	24/26	28/30
Body Length at Back	27 3/4	28 1/4	28 3/4	29 1/4	29 3/4	30 1/4	30 3/4	31 1/4
Bust	17 1/2	18 1/2	19 1/2	21	22 1/2	24	26	28
Sleeve Length from Center Back	32	32 1/2	33	33 5/8	34 1/4	35	35 1/4	35 5/8

**Body Length at Back:** Measured from high point shoulder to finished hem at back.

**Bust:** Measured across the chest one inch below armhole when laid flat.

**Sleeve Length from Center Back:** Measure from Center Back neck to shoulder point to sleeve hem.

## SIZE CHARTS

	XS	S	M	L	XL	XXL	3XL	4XL
Size	2	4/6	8/10	12/14	16/18	20/22	24/26	28/30
Bust	32-34	35-36	37-38	39-41	42-44	45-47	48-51	52-55

# SPEC SHEET + MEASUREMENTS

**SPORT-TEK**

Sport-Tek® Women's Sport-Wick® Flex Fleece Full-Zip.  
LST560

## HOW TO MEASURE

---



### **BUST**

Measure under the arm and around the fullest part of the bust with arms down, keeping tape horizontal.

## COLORS

---

Please note: PMS code information is shown only when an exact match is available.



Black  
PMS BLACK  
C



Dark Grey  
Heather



Light Grey  
Heather  
PMS 7687C



True Navy  
PMS 533C



True Royal  
PMS 7687C