

SPEC SHEET + MEASUREMENTS

PORT AUTHORITY.

Port Authority® Women's Accord Stretch Fleece Full-Zip.
LK595

Product photo



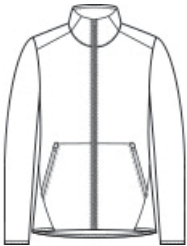
When the workplace is fast-paced, you need this smooth-faced, brushed-back stretch fleece that joins effortless performance with professional layering.

- 6.8-ounce, 90/10 poly/spandex fleece
- Moisture-wicking
- Dyed-to-match molded zipper
- Cadet collar with seaming
- Forward shoulder
- Front seams with integrated pockets
- Dyed-to-match zippered pockets
- Back waist seaming
- Slightly curved, drop tail hem

CARE INSTRUCTIONS

Machine Wash Cold With Like Colors. Do Not Use Fabric Softener. Do Not Bleach. Tumble Dry Low. Cool Iron If Necessary. Do Not Dry Clean.

Sketches



front



back

SPEC SHEET + MEASUREMENTS

PORT AUTHORITY

Port Authority® Women's Accord Stretch Fleece Full-Zip.
LK595

PRODUCT MEASUREMENTS

	XS	S	M	L	XL	XXL	3XL	4XL
Size	2	4/6	8/10	12/14	16/18	20/22	24/26	28/30
Body Length at Back	27 1/4	27 3/4	28 1/4	28 3/4	29 1/4	29 3/4	30 1/4	30 3/4
Bust	18 1/2	19 1/2	20 1/2	22	23 1/2	25	27	29
Sleeve Length from Center Back	31 1/4	31 3/4	32 1/4	32 7/8	33 1/2	34 1/8	34 1/2	34 7/8

Body Length at Back: Measured from high point shoulder to finished hem at back.

Bust: Measured across the chest one inch below armhole when laid flat.

Sleeve Length from Center Back: Measure from Center Back neck to shoulder point to sleeve hem.

SIZE CHARTS

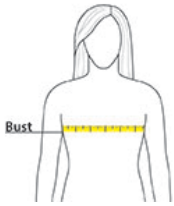
	XS	S	M	L	XL	XXL	3XL	4XL
Size	2	4/6	8/10	12/14	16/18	20/22	24/26	28/30
Bust	32-34	35-36	37-38	39-41	42-44	45-47	48-51	52-55

SPEC SHEET + MEASUREMENTS

PORT AUTHORITY.

Port Authority® Women's Accord Stretch Fleece Full-Zip.
LK595

HOW TO MEASURE



BUST

Measure under the arm and around the fullest part of the bust with arms down, keeping tape horizontal.

COLORS

Please note: PMS code information is shown only when an exact match is available.



Black
PMS BLACK
C



Navy
PMS 533C



Pewter



Royal
PMS 7687C



Wine
PMS 229C