

SPEC SHEET + MEASUREMENTS



Eddie Bauer® Women's Stretch Soft Shell Jacket. EB545

Product photo



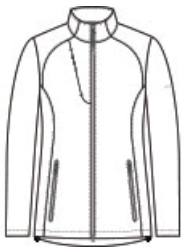
With 4-way stretch, a subtle ripstop texture and weather protection—this is the next-generation soft shell jacket to wear on the trails or around town.

- 90/10 polyester/spandex bonded to a waterproof film insert
- 100% polyester fleece lining
- 3K/3K waterproof/breathable fabric with durable water-repellent (DWR) finish
- Interior storm flap
- Chin guard
- Invisible zippered chest pocket
- Longer length, 2-way reverse coil center front zipper
- Eddie Bauer logo zipper pull
- Reverse coil zippered hand pockets
- Adjustable locking drawcord hem
- Embroidered Eddie Bauer logo on left shoulder

CARE INSTRUCTIONS

Machine Wash Cold With Like Colors. Do Not Use Fabric Softener. Do Not Bleach. Tumble Dry Low. Cool Iron. Do Not Dry Clean.

Sketches



front



back

SPEC SHEET + MEASUREMENTS



Eddie Bauer® Women's Stretch Soft Shell Jacket. EB545

PRODUCT MEASUREMENTS

	XS	S	M	L	XL	2XL	3XL	4XL
Size	2	4/6	8/10	12/14	16/18	20/22	24/26	28/30
Body Length at Back	30	30 1/2	31	31 1/2	32	32 1/2	33	33 1/2
Bust	18 1/8	19 1/8	20 1/8	21 5/8	23 1/8	24 5/8	26 5/8	28 5/8
Sleeve From Shoulder	32	32 1/2	33	33 5/8	34 1/4	34 7/8	35 1/4	35 5/8

Body Length at Back: Measured from high point shoulder to finished hem at back.

Bust: Measured across the chest one inch below armhole when laid flat.

Sleeve From Shoulder: Measured from high point of shoulder to finished hem at sleeve.

SIZE CHARTS

	XS	S	M	L	XL	2XL	3XL	4XL
Size	2	4/6	8/10	12/14	16/18	20	24/26	28/30
Bust	32-33	34-35	36-37	38-40	41-43	44-46	47-49	50-52

SPEC SHEET + MEASUREMENTS



Eddie Bauer® Women's Stretch Soft Shell Jacket. EB545

HOW TO MEASURE



BUST

Measure under the arm and around the fullest part of the bust with arms down, keeping tape horizontal.

COLORS

Please note: PMS code information is shown only when an exact match is available.



Deep Black
PMS BLACK
C



Iron Gate
PMS 7540C



River Blue
Navy
PMS 533C