

SPEC SHEET + MEASUREMENTS

PORT AUTHORITY.

Port Authority® Women's Value Fleece Vest. L219

Product photo



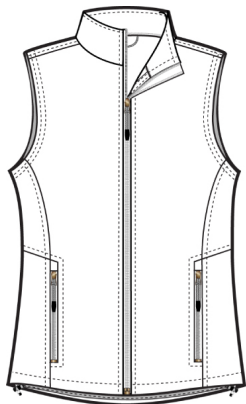
Ready for layering, this super soft, low-pill, midweight fleece vest offers great warmth at a great price.

- 8.3-ounce, 100% polyester
- Twill-taped neck
- Reverse coil zipper
- Chin guard
- Knotted zipper pulls
- Tricot-lined armholes
- Front zippered pockets
- Open hem with drawcord and toggle for adjustability

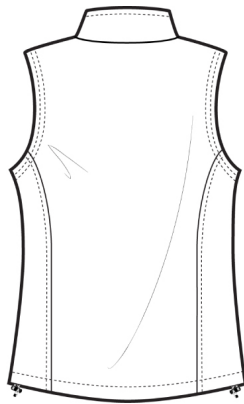
CARE INSTRUCTIONS

Machine wash cold. Gentle cycle with like colors. Non-chlorine bleach when needed. Tumble dry low. Remove promptly. Do not iron.

Sketches



front



back

SPEC SHEET + MEASUREMENTS

PORT AUTHORITY

Port Authority® Women's Value Fleece Vest. L219

PRODUCT MEASUREMENTS

| | XS | S | M | L | XL | XXL | 3XL | 4XL |
|---------------------|--------|--------|--------|--------|--------|--------|-------|--------|
| Size | 2 | 4/6 | 8/10 | 12/14 | 16/18 | 20/22 | 24/26 | 28/30 |
| Bust | 18 1/2 | 19 1/2 | 20 1/2 | 22 | 23 1/2 | 25 | 27 | 29 |
| Body Length at Back | 24 1/2 | 25 | 25 1/2 | 26 1/2 | 27 1/2 | 28 1/2 | 29 | 29 1/2 |

Bust: Measured across the chest one inch below armhole when laid flat.

Body Length at Back: Measured from high point shoulder to finished hem at back.

SIZE CHARTS

| | XS | S | M | L | XL | XXL | 3XL | 4XL |
|------|-------|-------|-------|-------|-------|-------|-------|-------|
| Size | 2 | 4/6 | 8/10 | 12/14 | 16/18 | 20/22 | 24/26 | 28/30 |
| Bust | 32-34 | 35-36 | 37-38 | 39-41 | 42-44 | 45-47 | 48-51 | 52-55 |

SPEC SHEET + MEASUREMENTS

PORT AUTHORITY.

Port Authority® Women's Value Fleece Vest. L219

HOW TO MEASURE



BUST

Measure under the arm and around the fullest part of the bust with arms down, keeping tape horizontal.

COLORS

Please note: PMS code information is shown only when an exact match is available.



Black
PMS BLACK
C



Iron Grey
PMS 7540C



True Navy
PMS 5255C



True Red
PMS 200C



True Royal
PMS 7687C