

# SPEC SHEET + MEASUREMENTS

PORT AUTHORITY.

## Port Authority® Essential Rain Jacket. J407

### Product photo



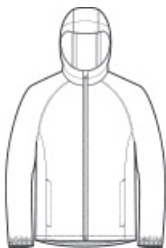
A year-round must-have, this fully seam-sealed 8K/5K waterproof, breathable 2.5-layer jacket has a DWR finish. It packs easily and gives great water-repellent, wind-resistant performance.

- 100% polyester shell bonded to a waterproof laminate film with DWR finish
- 8,000MM fabric waterproof rating
- 5,000G/M<sup>2</sup> fabric breathability rating
- Interior grid print
- Waterproof center front zipper
- Interior storm flap with chin guard
- Front zippered pockets
- Elastic cuffs

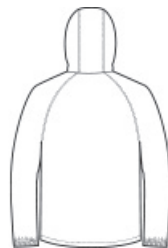
### CARE INSTRUCTIONS

Machine wash cold with like colors. Only non-chlorine bleach when needed. Tumble dry low. Cool iron if necessary. Do not Dry Clean.

### Sketches



front



back

# SPEC SHEET + MEASUREMENTS

PORT AUTHORITY

Port Authority® Essential Rain Jacket. J407

## PRODUCT MEASUREMENTS

	XS	S	M	L	XL	2XL	3XL	4XL
Body Length at Back	28 1/4	29 1/4	30 1/4	31 1/4	32 1/4	33 1/4	33 3/4	34 1/4
Chest	20 1/2	22	23 1/2	25	26 1/2	28	30	32
Sleeve Length	34 1/4	35	35 3/4	36 1/2	37 1/4	38	38 3/4	39 1/2

**Body Length at Back:** Measured from high point shoulder to finished hem at back.

**Chest:** Measured across the chest one inch below armhole when laid flat.

**Sleeve Length:** Start at center of neck and measure down shoulder, down sleeve to hem.

## SIZE CHARTS

	XS	S	M	L	XL	2XL	3XL	4XL
Chest	32-34	35-37	38-40	41-43	44-46	47-49	50-53	54-57

## HOW TO MEASURE



### CHEST

Measure under the arm and around the fullest part of the chest with arms down, keeping tape horizontal.

# SPEC SHEET + MEASUREMENTS

PORT AUTHORITY.

Port Authority® Essential Rain Jacket. J407

## COLORS

---

Please note: PMS code information is shown only when an exact match is available.



Deep Black  
PMS BLACK  
C



Deep Red  
PMS 207C



Graphite  
PMS 432C



True Navy  
PMS 533C



True Royal  
PMS 7687C