

SPEC SHEET + MEASUREMENTS



Eddie Bauer® WeatherEdge® Jacket. EB558

Product photo



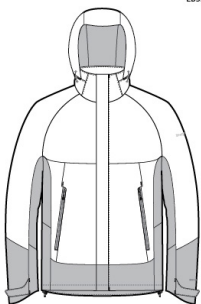
Two element-fighting WeatherEdge 5K/5K fabrics come together in this jacket for highly waterproof, breathable performance.

- 94/6 poly/spandex and 92/8 poly/spandex
- Fully seam-sealed
- StormRepel® durable water-repellent (DWR) coating for additional weather protection
- Four-way stretch for easy mobility
- Adjustable hood with locking drawcord
- Waterproof molded front zippered pockets
- Adjustable tab cuffs with hook and loop closures
- Decoration access pocket
- Adjustable locking drawcord hem
- Contrast heat transfer Eddie Bauer and WeatherEdge logos on left sleeve

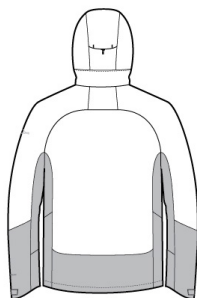
CARE INSTRUCTIONS

Machine wash cold with like colors, only non-chlorine bleach when needed, tumble dry low, warm iron if necessary.

Sketches



front



back

SPEC SHEET + MEASUREMENTS



Eddie Bauer® WeatherEdge® Jacket. EB558

PRODUCT MEASUREMENTS

	XS	S	M	L	XL	2XL	3XL	4XL
Chest	20 1/2	22	23 1/2	25	26 1/2	28	30	32
Body Length at Front	28 1/4	29 1/4	30 3/8	31 1/2	32 5/8	33 3/4	34 3/8	35
Sleeve Length	34 3/4	35 1/2	36 1/4	37	37 3/4	38 1/2	39 1/4	40

Chest: Measured across the chest one inch below armhole when laid flat.

Body Length at Front: Measure from high point shoulder to lowest point of hem at front.

Sleeve Length: Start at center of neck and measure down shoulder, down sleeve to hem.

SIZE CHARTS

	XS	S	M	L	XL	2XL	3XL	4XL
Chest	32-34	35-37	38-40	41-43	44-46	48-50	52-54	55-57

HOW TO MEASURE



CHEST

Measure under the arm and around the fullest part of the chest with arms down, keeping tape horizontal.

SPEC SHEET + MEASUREMENTS



Eddie Bauer® WeatherEdge® Jacket. EB558

COLORS

Please note: PMS code information is shown only when an exact match is available.



Black
PMS BLACK
C



Cobalt Blue/
River Blue
Navy
PMS 654C



Metal Grey/
Grey Steel
PMS COOL
GREY 10C